



NEWINGTON LONDON

1 Bedrooms

Apartment

Located in London

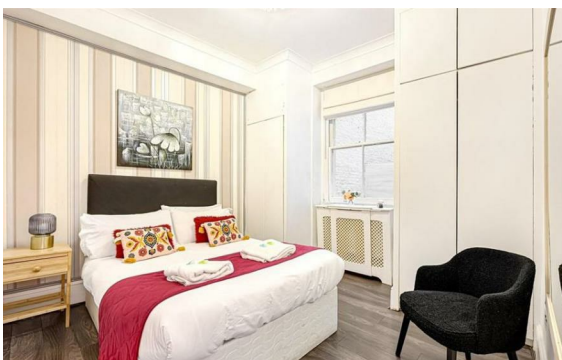
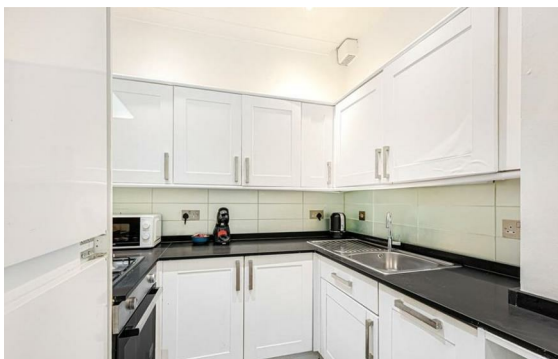
£800 Per Month



info@newingtonstates.com

<http://www.newingtonstates.com>

020 7724 2233



Exceptional one-bedroom apartment on the ground floor of this classical Mayfair property located in the heart of Mayfair moments from Berkeley Square, restaurants, boutiques and the open spaces of both Hyde Park and Green Park.

Comprising of one double bedroom, modern bathroom, large reception room with beautiful furniture and high ceiling leading into fully fitted kitchen with excellent appliances. The property is flooded with light and benefits from high quality materials throughout.

EPC rating: C

Energy Efficiency Rating: C

Agents Note: Whilst every care has been taken to prepare these particulars, they are for guidance purposes only. All measurements are approximate and are for general guidance purposes only and whilst every care has been taken to ensure their accuracy, they should not be relied upon and potential buyers/tenants are advised to recheck the measurements.

NEWINGTON LONDON

60 Upper Montagu Street

London

W1H 1SN

020 7724 2233

info@newingtonstates.com

<http://www.newingtonstates.com>